



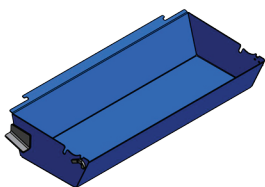
INSTRUCTION SHEET

Mark Andy Performance Series

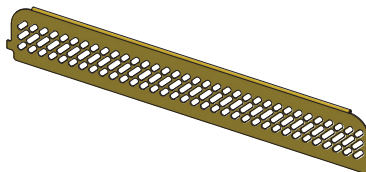
DIP Company appreciates having this opportunity to save you time and money in your printing operation. Follow the steps below to set up and use your new **"Quick Change"** ink fountain system. Please note, DIP offers many trial kits and yours may look different but is used in the same way.

COMPONENTS

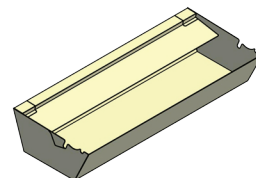
STEEL RETAINER



BAFFLE



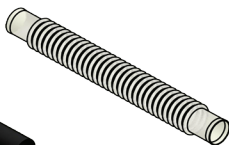
PAPER LINER



HOSES

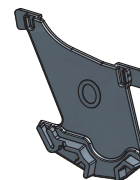


Straight Hose



Corrugated Hose

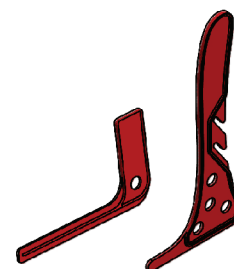
BEARING HOLDER



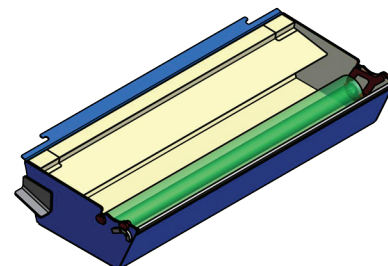
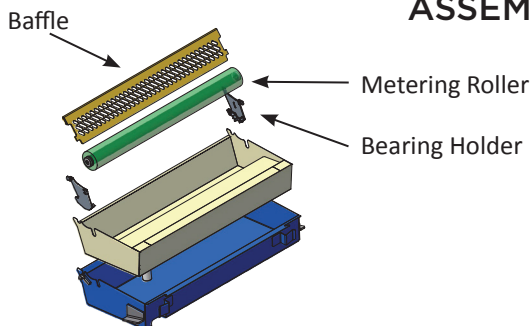
RUBBER STOPPER



INK SPATULA STIR STICK



ASSEMBLED VIEW



CORPORATE
OFFICE

1775 Gunnison
Avenue
Delta, CO 81416

Phone
970.874.2852

Fax
970.874.9756

Web
dipworldwide.com

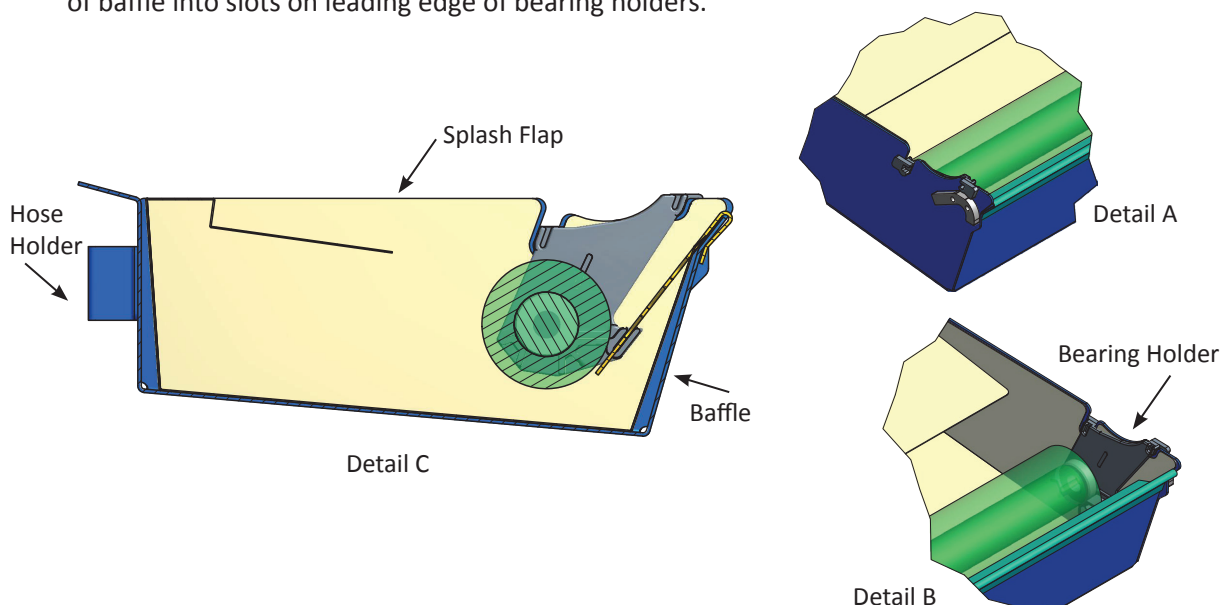
MADE IN THE USA
SINCE 1984!

Diversified Innovative Products



ASSEMBLY INSTRUCTIONS

1. If your liner has a drain; support the drain on the inside of the liner with one hand and push the drain hose onto the drain.
2. Place the paper liner into the steel retainer.
3. Attach bearing holders with the liner between the retainer and bearing holders. Make sure it goes into both slots as shown. (see detail images)
4. Install metering roller into bearing holders as you would with the OEM ink fountain.
5. Install top of Mark Andy baffle over the liner and retainer and slide bottom tabs of baffle into slots on leading edge of bearing holders.



6. Loop the hose into the hose holder.
7. Place the whole assembly into the press the same way you would the OEM ink fountain.

TIPS:

1. There are two score lines, the bottom line represents the initial ink fill line. The top score line is there as a reference point above the ink level.
2. This liner has a splash flap on the back that catches ink spray when running at high speeds.
3. The hose knockout on the inboard side of the liner is for those operators who pump ink. The pump hose can be fed through the hose holder.

CLEANUP:

1. When finished with a run, drain the ink out of the liner.
2. Replug the liner or rehang the drain hose.
3. Clean the majority of ink from the rollers and journals. The liner will catch your wash-up fluids.
4. Remove metering roller, baffle and bearing holders.
5. Remove the retainer/liner from the press. Discard liner, bearing holders and hose. (NOTE – it will cost you more time and money to clean dirty bearing holders and hose than use new components on the next run.)

*Thank you for trying DIP Company "Quick Change" liner systems.
Please call your sales person or customer service if you have any questions.*